

CLERK'S RECORDING CERTIFICATE

I, MARSHA STILLER, CLERK OF THE CIRCUIT COURT OF MARTIN COUNTY, FLORIDA, HEREBY CERTIFY THAT THIS PLAT WAS FILED FOR RECORD IN

PLAT BOOK 14, PAGE 42, MARTIN COUNTY, FLORIDA, PUBLIC RECORDS THIS

20th DAY OF January, 1997, MARSHA STILLER, CLERK OF THE CIRCUIT COURT MARTIN COUNTY, FLORIDA.

FILE NUMBER 1224847 BY Charlotte Burkey DEPUTY CLERK

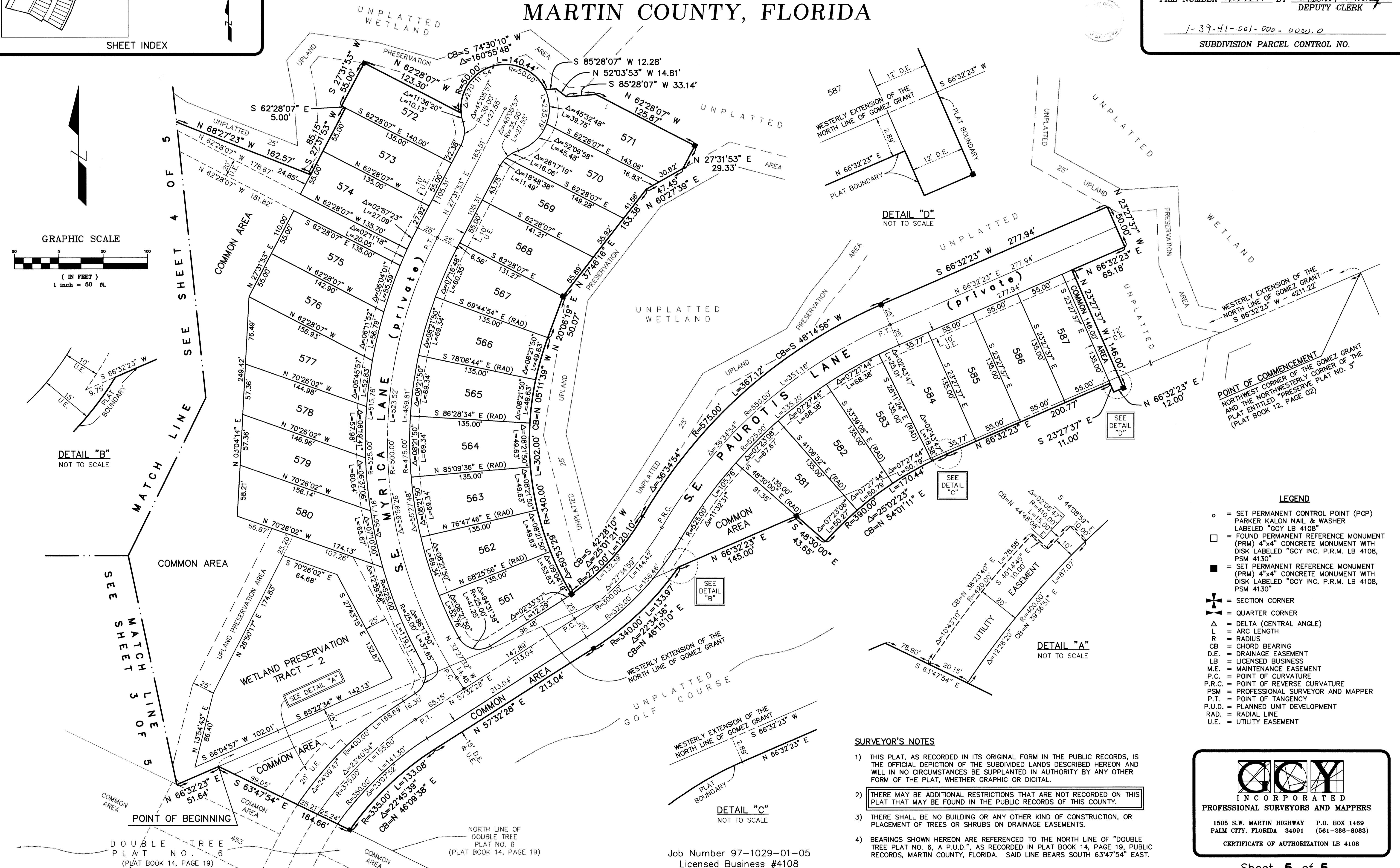
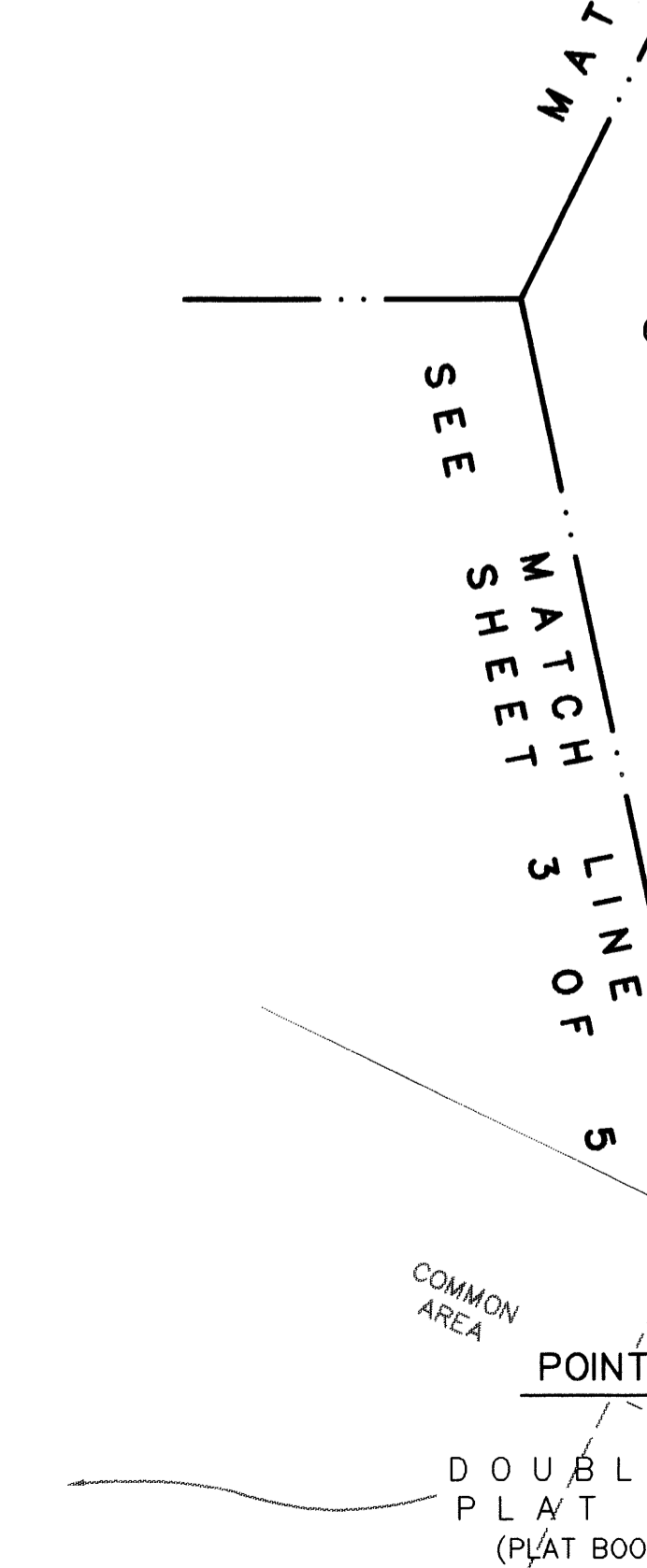
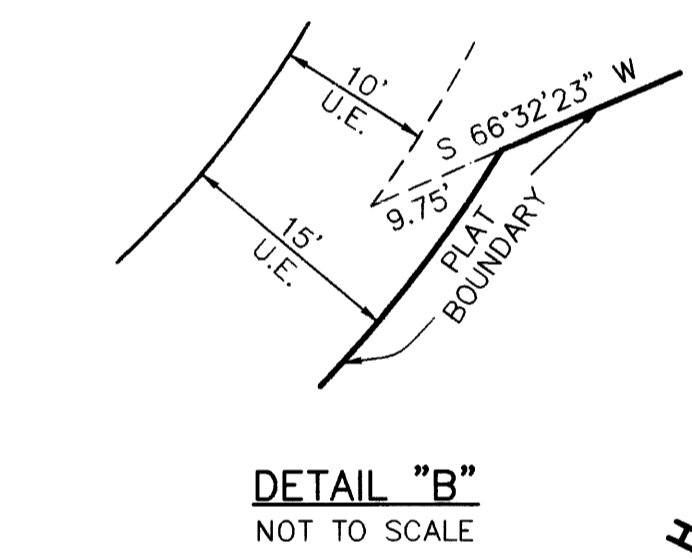
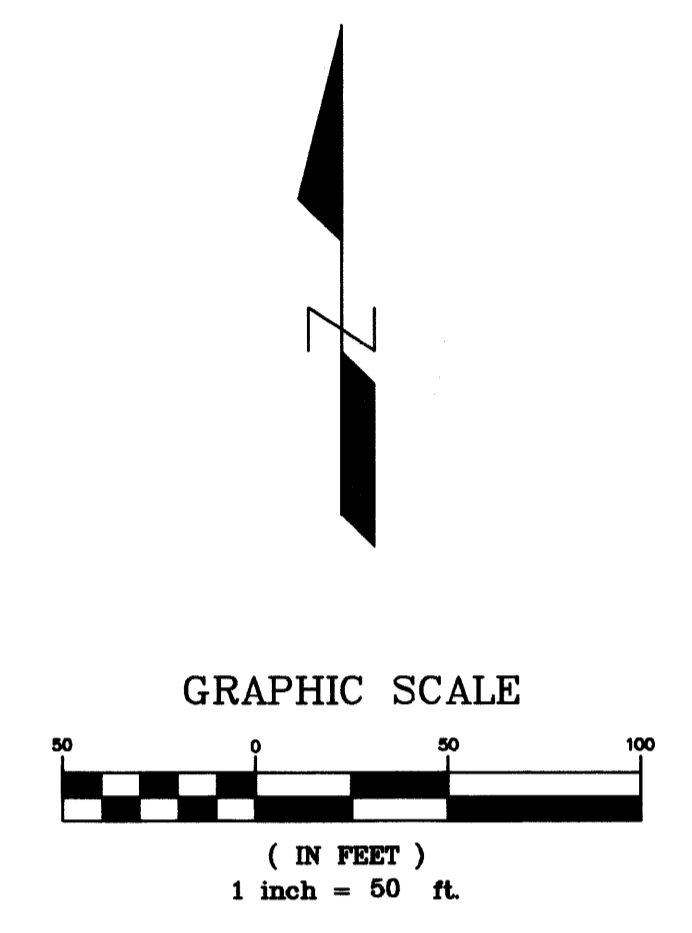
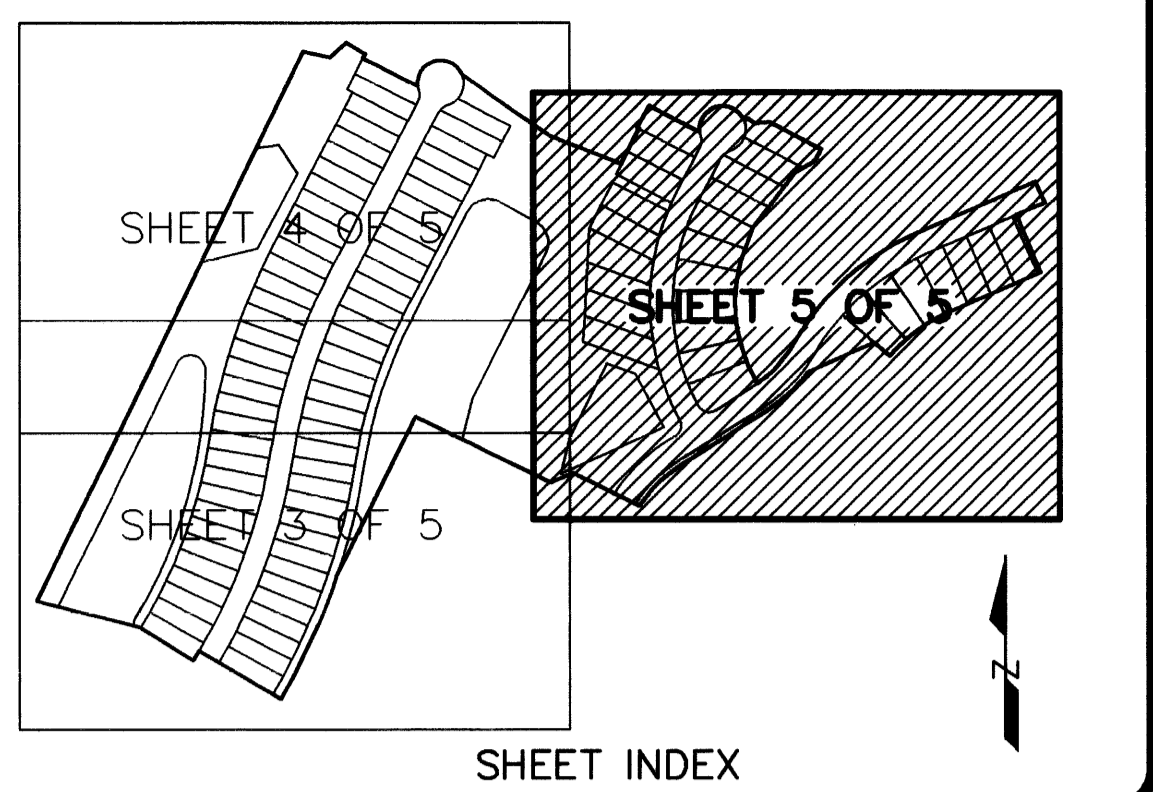
1-39-41-001-000-0000-0

SUBDIVISION PARCEL CONTROL NO.

DOUBLE TREE PLAT NO. 7, A P.U.D.(r)

"A PLAT OF PHASE IIIB"

BEING A PORTION OF LAND LYING IN SECTIONS 1 AND 2, TOWNSHIP 39 SOUTH, RANGE 41 EAST MARTIN COUNTY, FLORIDA



- LEGEND: Symbols for SET PERMANENT CONTROL POINT (PCP), PARKER KALON NAIL & WASHER, FOUND PERMANENT REFERENCE MONUMENT (PRM), SET PERMANENT REFERENCE MONUMENT (PRM), SECTION CORNER, QUARTER CORNER, DELTA (CENTRAL ANGLE), ARC LENGTH, RADIUS, CHORD BEARING, DRAINAGE EASEMENT, LICENSED BUSINESS, MAINTENANCE EASEMENT, POINT OF CURVATURE, POINT OF REVERSE CURVATURE, PROFESSIONAL SURVEYOR AND MAPPER, POINT OF TANGENCY, PLANNED UNIT DEVELOPMENT, RADIAL LINE, UTILITY EASEMENT.

- SURVEYOR'S NOTES: 1) THIS PLAT, AS RECORDED IN ITS ORIGINAL FORM... 2) THERE MAY BE ADDITIONAL RESTRICTIONS... 3) THERE SHALL BE NO BUILDING OR ANY OTHER KIND OF CONSTRUCTION... 4) BEARINGS SHOWN HEREON ARE REFERENCED TO THE NORTH LINE OF "DOUBLE TREE PLAT NO. 6, A P.U.D.", AS RECORDED IN PLAT BOOK 14, PAGE 19, PUBLIC RECORDS, MARTIN COUNTY, FLORIDA.

GCY INCORPORATED PROFESSIONAL SURVEYORS AND MAPPERS 1505 S.W. MARTIN HIGHWAY P.O. BOX 1489 PALM CITY, FLORIDA 34991 (561-286-8083) CERTIFICATE OF AUTHORIZATION LB 4108